

WVFC

The WVFC conducts training on Thursdays at 7pm at the Fire Hall. Contact Chief Bill Ellis at 472-3245 or Assistant Chief Sara West at 472-3990. The next board meeting will be on September 27th, 7pm at the Fire Hall.



The WFSC has received a grant from PG&E ...!! With the other grants from SPI and WVFC we are all on our way to making our community even more Fire Safe. The next community meeting will be on October 9th, 7pm at the Community Center. FireWise phone trees are being made and practice drills have been happening. Get to know your neighbors. Find out who your Resident Leader is...!!!

Chris Withey

WFSC Chairman .



WVFC

News from the top....

My wife and I had a great opportunity to take a vacation the last 2 weeks of August, which included 10 days in Klamath and Gold Beach. We went through the devastation of the Carr fire on Highway 299, seeing some building starts and nature greening up the barren wild land. On the way, I also saw many communities posting signs about Fire Wise and Fire Safe Councils. This is a great display of communities that are pulling together, volunteering, caring and protecting their people, buildings and environments. While I was relaxing I got a great email from Debbie Nicora that Whitmore Community Center, Whitmore Fire Safe Council, Whitmore FireWise, and Whitmore Volunteer Fire Company were approved for the CBO Direct Program (through PGE) grant this month for \$10,000.00. This is the first grant for Fire Wise organization in Whitmore, a wonderful achievement so quickly after being formed. I am grateful to the community members that have made the commitment to the FireWise and FireSafe program, you are making a big difference for all of us in Whitmore. Before vacation, I got to see the how Whitmore takes care of itself, a driver saw a fire at the Frontier substation on Fern road and found someone at home across the street. My neighbors quickly came together and put out the flames with a garden hose. A CalFire engine arrived and took over the situation. A quick response by everyone kept a possible disaster from happening. Like our 72 year old friend Smokey the Bear says, "Remember... only YOU can prevent wildfires." We are still facing a few more months of fire season, so please keep up the good work of being Fire Wise.

Brian

[530-604-9933](tel:530-604-9933)

**Whitmore School News**

Dear Community Members, Welcome back to the new school year. Whitmore Elementary School's classes began August 26th at 8:25 a.m. The anticipation and excitement of the first day of school was shared by the new to the school students and those students returning. As always, we have an open-door policy. We ask that visitors please sign in at the office before visiting any of the classrooms.



The next WCC board meeting will be on September 11th, 7:00pm at the Community Center. We would also like to invite you all to come by and grab some lunch at the Equestrian Trail Ride on October 6th, a bbq tri-tip lunch will be served from about 11:00am-1pm, \$10 gets you some great grub..!

Breakfast will be held on Sunday, September 8th from 8-11am. Come join us for good food and good company! Just \$8 for all you can eat, kids 10 and under \$3.

Next community breakfast is on October 13th, 8-11am.

Bingo will be held on Saturday, September 28th. Dinner at 5:30pm and bingo about 6, come see what we are cooking up for you all!

Whitmore Library

Hello from 1310, 1310 plus a 472 in front of it, connects you to the Whitmore Library. It is always good to call before you visit since our September through June 15 schedule has not yet been finalized.

At the present the Library needs a few volunteers to keep open weekdays from 9 a.m. to 3 p.m. Three-hour shifts are available on Mondays and Fridays. It may likely be the easiest job you have ever had..!

Jeri Johnson

Matt has been repairing the many leaks in the watering system over the

summer and has revitalized the area around the stairs. The parking lot and playground have been resurfaced and new circles and squares have been painted for the many games Ms. Gonzalez has learned.

We would like to revive the Parent Club for the benefit of the students.

Parents and community members, If you are interested in helping out, the meeting dates will be posted at the General Store and post office, along with flyers be sent home.

The garden has been moved and a new herb garden has been established.

The long-term goal is to have fresh herbs for the kitchen's use. We know that the students like to have produce they produced served for their lunches. Ms. Gonzalez is always looking for adult helpers, so if you can spare a little time and enjoy gardening, give the school a call. 472-3243



FALL 2019 Newsflash from the Firecrackers

We had a good turnout for our **ANNUAL OPEN HOUSE AND ICE CREAM SOCIAL**. The weather was just right and we had a steady stream of neighbors stop in to visit and enjoy our treats. We appreciate your support.

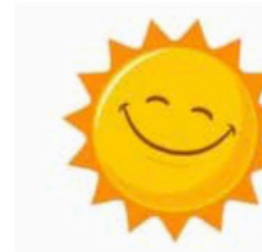
Coming up October 6th we have our "**Horsin Around Trail Ride**". This is a self-guided trail ride sponsored by the Fire Crackers (the fund-raising arm of the fire company). But for those that don't ride come on down to the community center and enjoy a Tri-Tip lunch. You won't be disappointed.

Speaking of disappointment, I apologize for the inconveniences some of you may have experienced with the local transfer site. This site is operated by the fire company and a group of local volunteers. Some of the problems we've had is a smaller dumpster that fills up quickly and the site closes early or the bin was not picked up as scheduled. We are also closed more days due to lack of volunteers. You may have noticed that our hours have changed to 10am-2pm as well. We keep the prices low and hope to keep trash out of the woods. If you ever have a problem, please call Bill Ellis and we will work out a solution.

Also, in October—a **HUGE COMMUNITY YARD SALE** Sunday the 20th. Call Margie Voytek at 472-3338 or the Whitmore General Store for more information. We hope many of you will join the fun.

Finally, it's not too late to finish up your crafts to sell at our annual **Christmas Bazaar**, scheduled for Saturday, December 7th. We'll keep you posted.

For more information about the fire company, fire safe council, firecrackers, the community or need assistance, call me, Holly Ellis at 472-3245





Whitmore has a rich history of ranching, farming and country life in general... sometimes there is humor and irony to be found in the daily routines of being a ranch wife.

Bee, a writer for the website www.jeffersonsdaughters.com is a local Whitmore resident who shares her take on Jeff Foxworthy's "You might be a Redneck if...."

- If your vehicle has a bumper sticker that reads "Eat beef - the West wasn't won on salad"...
- If you can back up a four-horse trailer without crying, swearing or the use of alcohol...
- If you whip a Leatherman tool out of your purse to fix the bent tines on a restaurant fork...
- If you and the kids can spend 30 minutes or more debating the finer points of watching lambs vs. piglets at play...
- If you have ever grossed out some of your more sheltered friends with butchering stories...
- If, after sending your spouse to the doctor after he tried to cut his thumb off, you end up on speakerphone, using available vehicles for lighting, being walked through how to process (i.e. gut) some kind of animal...
- If your definition of a "flash mob" is the chickens hitting the gate en masse when they hear the rattle of the feed bucket...
- If you have scrounged around in your pie tins looking for a suitable chicken feeder...
- If you think watching baby pigs is just as entertaining as going to the movies...
- If you have ever had newborn livestock in your house because it's too cold, wet or windy...
- If your refrigerator contains a big bottle of veterinary penicillin between the raw milk & the free range eggs...
- If you know that the best way to get fresh pitch off your hands is to use butter...
- If your immediate response to a rattlesnake in your garden or a mouse in your kitchen is violence rather than a shrieking retreat...
- If your "town" clothes consist of a clean tee shirt and the least stained jeans you can find...
- If your first reaction to a cow pooping on your front lawn is "Oh, good, now I don't have to haul fertilizer to the flowerbed"...
- If the integral components of your weight lifting program are small children, buckets of pig slop, firewood and bales of hay...
- If you tell the repairman that the noise your dishwasher is making sounds "just like a fuel-starved John Deere"...

You Might Be A Ranch Wife!!

On another note: Whit-bits is a human-interest page to keep things light and maybe learn a little more about each other here in town. This page is not exclusive to me. If you have a funny story, and interview, something to share... mail it to me @ P.O. Box 279 or contact Chris Withey or Tania at the Whitmore Store.



WHITMORE VOLUNTEER FIRE COMPANY, INC. PRESENTS THE 7TH ANNUAL



Whitmore Horsin' Around Trail Ride

OCTOBER 6TH 2019

**\$25 DONATION INCLUDES BBQ LUNCH @ NOON AFTER THE FUN
SELF-GUIDED 7 MILE TRAIL RIDE
REGISTRATION @ 8AM • LAST RIDER OUT @ 10AM**

**SILENT AUCTION & RAFFLES • WINNERS ANNOUNCED @ 1PM
WHITMORE COMMUNITY CENTER TRI-TIP LUNCH
RIDE ONLY: \$15 • TRI-TIP LUNCH ONLY: \$10**

**REGISTRATION @ WHITMORE COMMUNITY CENTER
30555 WHITMORE ROAD • WHITMORE CA 96096**



**PLEASE FOR YOUR SAFETY: NO STALLIONS, DOGS,
RIDING DOUBLE OR LOPPING/RUNNING**



**FOR MORE INFO CALL DEBBIE AT 530.472.1429 OR AROCINI3@AOL.COM
ALL PROCEEDS BENEFIT WHITMORE VOLUNTEER FIRE COMPANY, INC.**

Thank you Waste Management!!!

...And to all Whitmore residents for cleaning up their property and/or helping their neighbors by bringing in over 10 tons of garbage; this doesn't even include the dumpster full of appliances, the E-waste, or the 1-1/2 dumpsters of metal. A little bit at a time to make Whitmore a better, safer place. Looking to add tires, batteries, and paint disposal at some time. A big thank you to the volunteers that were there to help, Dave, Joe, Jim, our county supervisor Mary Rickert, and the girls from the Riverside Academy. **WE APPRECIATE EACH AND EVERY ONE OF YOU!**



Huge Community Garage Sale

Clean up and clear out those items you don't use or have room for anymore.

Time for someone else to enjoy them and make a little money too!

Hope you can join the fun!!

HUGE GARAGE SALE

If you are interested in participating please contact Margie Voytek at 472-3338 or the Whitmore Store with your address and general content of what you will be selling, ie. furniture, antiques, camping gear, kitchen wares, miscellaneous items. We will make up a map of the households interested in this event so buyers can plan their shopping adventure. Please include the time you will be open for business if different than the 8:00 am start.

October 20th
8:00 am – 2:00 pm

**Are you finding yourself bored
or sick of watching TV on a Saturday Night?
Come eat dinner and play BINGO with your friends and neighbors!
4th Saturday Every Month
Starts at 5:30pm
at the Whitmore Community Center**

What's Your Five-Minute Plan?

In 2018, California had one of the deadliest and most destructive fire seasons ever with over 1.8 million acres burned. We are working now to better prepare our communities for wildfires and disasters. One focus has been to increase the access to safety information that gives our residents what they need to plan and prepare. The Whitmore Fire Safe Council is working with Pacific Gas & Electric Company on this, and we hope it makes all of the difference in keeping everyone safe.

People are being asked to prepare a Five-Minute Plan to evacuate their homes immediately and watch for Red Flag Warnings. Evacuation orders mean you must leave right away to avoid getting stuck. Preparing a Five-Minute Plan ahead of time gets your family ready to go quickly once you are ordered to leave.

There are steps that must be taken in order to be able to leave in five minutes.

- Mark evacuation routes on a map.
- Plan where to go if you can't go back home.
- Put together an emergency supply kit.
- Explain the plan to children in your home.
- Practice leaving your home in just 5 minutes.

WHAT IS A FIVE MINUTE PLAN?

A Five Minute Plan gets you ready to leave the house after being ordered to evacuate.

- Mark evacuation routes on a map**
- Plan where to go if you can't go home**
- Explain the plan to young children**
- Put together an Emergency Supply Kit**
- Practice leaving the house in five minutes**



More Information @ www.WHITMOREFIRESAFE.org

WHAT IS A RED FLAG WARNING?

A Red Flag Warning is the **HIGHEST** level of warning for fires.



A Red Flag Warning means there's increased fire danger in your area.



You wouldn't ignore a tornado warning, and you shouldn't ignore a Red Flag Warning.



Not taking it seriously can lead to your family getting trapped.



Be ready to leave your house in **FIVE MINUTES** if ordered to evacuate.

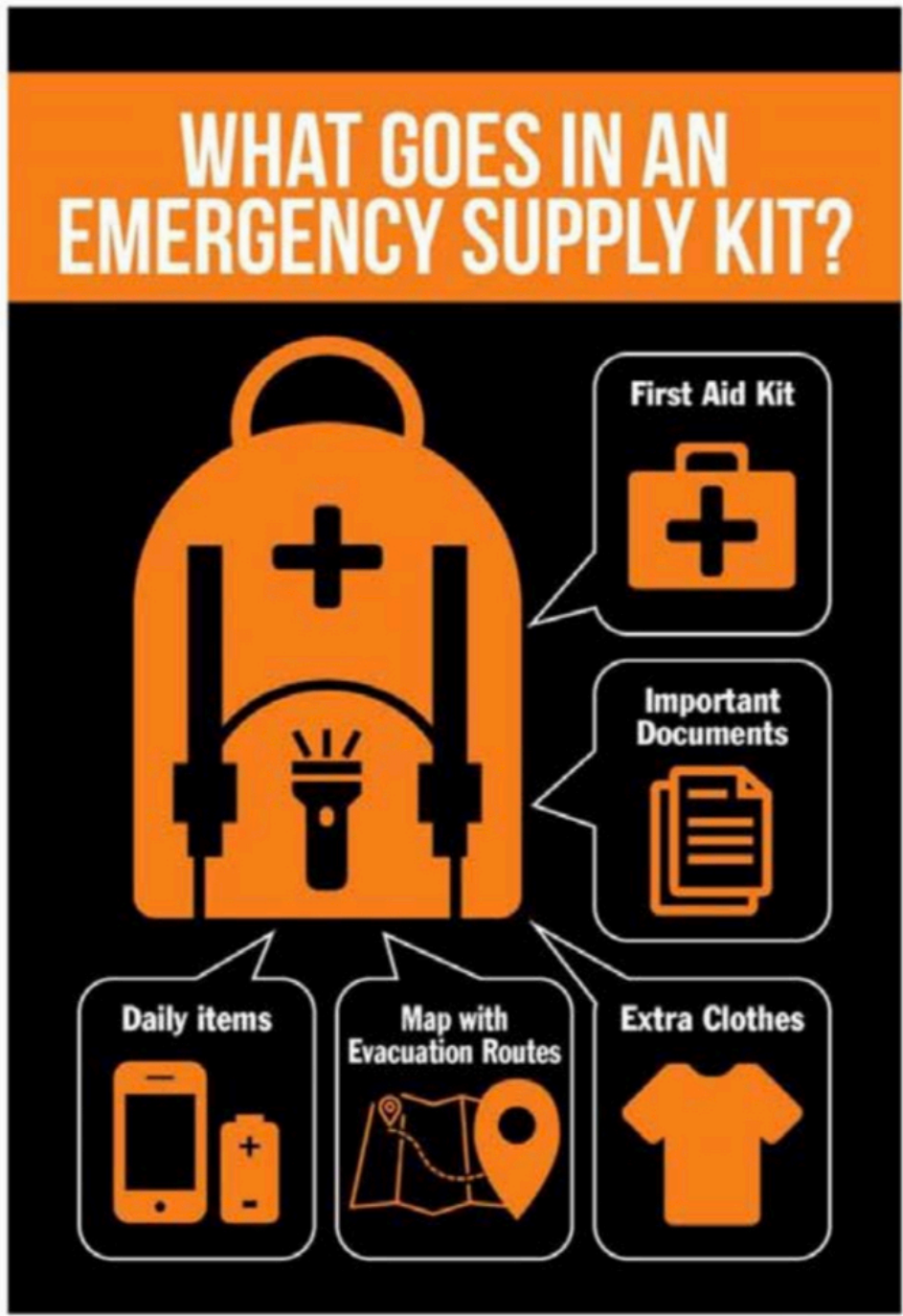


CALIFORNIA
FIRE
FOUNDATION



More Information @ www.WHITMOREFIRESAFE.org

WHAT GOES IN AN EMERGENCY SUPPLY KIT?



More Information @ www.WHITMOREFIRESAFE.org

SUNDAY, SEPTEMBER 29

9am - 1pm

FREE

HOUSEHOLD HAZARDOUS WASTE COLLECTION EVENT

at the Shingletown Transfer Station
Hwy 44 at Ritts Mill Rd., Shingletown, CA



Open **ONLY** to
Shasta County Households

Business-generated waste will not be accepted.

For more information, call us at
(530) 225-5789 or
visit recycle.co.shasta.ca.us



ITEMS ACCEPTED

Paint and Paint Products (Latex and Oil-Based), Motor Oil, Oil Filters, Antifreeze, Solvents, Cleaners, Pesticides, Fertilizers, Batteries, Pool Chemicals, Sharps, Fluorescent Light Tubes and Bulbs, Propane and Fire Extinguisher Cylinders, Aerosol Cans, and other products with warning labels such as **Caution, Danger, Toxic, Flammable, Keep out of the Reach of Children.**

We will also accept **Electronic Waste, such as** Computers, TVs, Phones, Radios, Printers, etc.

DO NOT BRING: Trash, Yard Waste/Brush, Tires, Pharmaceuticals, Appliances, Explosives, Ammunition, Radioactive Materials (Smoke Detectors), Biological Waste, or Business Waste

Our partnership with PaintCare provides for **FREE** recycling of paint, stains, and varnish.

To learn more or find other PaintCare locations, call (855) PAINT09 or visit www.paintcare.org (Nine sites in Shasta County accept paint all year).



Shasta County residents can also utilize the City of Redding's Household Hazardous Waste Collection Facility for free. Call (530) 224-6209 for more information.

FIREWISE NEIGHBORHOODS

The Whitmore Fire Safe Council has been hard at work developing new ways to communicate and network with your friends and neighbors in Whitmore, as we all work towards the goal of making our community fire-safe. As part of our FIREWISE program, we have divided the Whitmore area of nearly 155 square miles into 9 individual neighborhoods, then set up a Facebook group page for each of the 9 FIREWISE neighborhoods. (This was part of the beginning stages of the phone tree program.) Please take a moment to review the list below and share it with your friends, family and neighbors here in Whitmore. If you are unsure which neighborhood group to join, or who your Resident Leader is, please contact us and we can provide you with that information.

Main List of ALL Groups:

<https://www.facebook.com/pg/WHITMORECAG/groups>

Individual Groups & Resident Leaders:

- Whitmore Rd West - Art Tilles & David Roth
- South Cow Creek & Hufford - Joe & Deb Pulcini, Chris Withey
- Blue Mountain Rd - Vicki Sands
- Whitmore Rd East - Melissa Brehmer & Holly Ellis
- Fern Rd East - Margie Voytek, R.V. Scheide & Rick Novack
- Fern Rd North - Neal Sternberg & P.J. Tillman
- Fern Rd West - Neal Sternberg & P.J. Tillman
- Bateman & Tamarack - Ron & Patty Plumb
- Ponderosa Way - Ron & Patty Plumb

Find more info at: www.WHITMOREFIRESAFE.org



FIREWISE Emergency Notification Phone Tree Information Card



As the Whitmore Fire Safe Council works towards the goal of enacting a community emergency notification program, we are gathering as much contact information for as many community members as possible. Once organized according to each FIREWISE neighborhood, we will begin building a phone tree for each neighborhood so that in the event of a wildfire or other emergency, we can get the word out as quickly and efficiently as possible.

Please fill out the information below with any details that others may need to know in the event of an emergency. Your information will not be sold, given away or used for solicitation purposes, but will be provided to the FIREWISE Resident Leader assigned to your neighborhood, and will be used only for emergency notifications or to contact you regarding the program. If you have any questions or concerns, please feel free to contact us by attending one of our monthly public meetings, directly through our website www.whitmorefiresafe.org, or through the Whitmore Community Action Group Facebook page.

Once completed, you can return this form by dropping it off to the Whitmore General Store at 30560 Whitmore Rd. or by mailing it to the following address...

Whitmore Fire Safe Council

P.O. Box 287

Whitmore, CA 96096

Name: _____ # of People In Home: _____

Address: _____

Phone: _____ Alternate Phone: _____

Special Needs (Medical, Animals, Access Issues, etc.)

For Office Use Only:

FIREWISE Neighborhood: _____

Resident Leader: _____

Whitmore Community Calendar

Abbreviations: WVFC=Whitmore Volunteer Fire Company
WCC=Whitmore Community Center • WFSC=Whitmore Fire Safe Council

SEPTEMBER						
SUNDAY	MONDAY	TUESDAY	WEDNESDAY	THURSDAY	FRIDAY	SATURDAY
1	2	3	4	5 FIRE TRAINING 7:00PM @ FIRE HALL	6	7
8 WCC BREAKFAST 8AM-11AM @ COMMUNITY CENTER	9	10	11 WCC BOARD MEETING 7:00PM @ WCC	12 FIRE TRAINING 7:00PM @ FIRE HALL	13	14
15	16	17	18 WVFC BOARD MEETING 6:30PM @ WVFC	19 FIRE TRAINING 7:00PM @ FIRE HALL	20	21
22	23	24	25	26 FIRECRACKER MEETING 10am-12pm @ WHITMORE LIBRARY FIRE TRAINING 7:00PM @ FIRE HALL	27	28 WCC BINGO & DINNER 5:30PM TO ? @ WCC
29	30					

OCTOBER						
SUNDAY	MONDAY	TUESDAY	WEDNESDAY	THURSDAY	FRIDAY	SATURDAY
		1	2	3 FIRE TRAINING 7:00PM @ FIRE HALL	4	5
6 WVFC TRAIL RIDE @ 8AM MEET @ WCC SEE AD PAGE 4	7 FIRE DRILL! PHONE TREE DRILL @ 7PM	8	9 WFSC PUBLIC MEETING @ 7PM @ WCC	10 FIRE TRAINING 7:00PM @ FIRE HALL	11	12
13 WCC BREAKFAST 8AM-11AM @ COMMUNITY CENTER	14	15	16	17 FIRE TRAINING 7:00PM @ FIRE HALL	18	19
20 COMMUNITY YARD SALE 8AM-? SEE AD PAGE 5	21	22	23	24 FIRECRACKER MEETING 10am-12pm @ WHITMORE LIBRARY FIRE TRAINING 7:00PM @ FIRE HALL	25	26 WCC BINGO & DINNER 5:30PM TO ? @ WCC
27	28	29	30	31 FIRE TRAINING 7:00PM @ FIRE HALL		



WHITMORE VOLUNTEER
FIRE COMPANY, INC.
PO BOX 91
WHITMORE, CA 96096

ECRWSS
U.S. POSTAGE
PAID
REDDING, CA
PERMIT #57

POSTAL CUSTOMER
WHITMORE, CA 96096

**WHITMORE
GENERAL STORE**

MONDAY - FRIDAY 7AM - 7PM
SATURDAY & SUNDAY 8AM - 7PM
(530) 472-3216
FIND US ON FACEBOOK @WHITMOREGENERALSTORE

FRESH GROUND COFFEE EVERY MORNING
GROCERIES - PRODUCE - BREAD & BAKERY ITEMS
FRESH MILK & DAIRY PRODUCTS - ICE CREAM - SNACKS - CANDY
SODA - JUICE - BEER & WINE - ICE - GASOLINE & OIL
HANDCRAFTED GIFT SHOP - W.V.F.C. SHIRTS & MEMORABILIA

PIZZAS, DELI SANDWICHES & WRAPS
MADE TO ORDER - DINE IN OR TO-GO
VISIT US ON FACEBOOK FOR OUR DAILY FOOD SPECIALS

FAX & COPY SERVICE AVAILABLE
ALL MAJOR CREDIT/DEBIT CARDS & EBT ACCEPTED

Palo Cedro
PRINTING

IS STILL IN BUSINESS!

CALL-IN OR EMAIL ORDERS
547.2266
graphics@palocedroprinting.com

**FULL SERVICE GRAPHIC DESIGN, PRINTING, SIGNS,
BULK MAILING AND NOTARY SERVICES AVAILABLE**

Antiques • Collectibles • Clothing • Furniture

 **The Way Station** 
at Whitmore
Thrift and Consignment
"A Little Something for Everyone"

Shop: (530) 472-3535 30517 Whitmore Rd.
Msgs: (530) 472-1794 Whitmore, CA 96096

Tools • Glassware • Hardware • and Much More!

*Aamigo
Supply*

Want friendly knowledgeable one on one advice?
Think outside the big-box stores and visit us first!
We have everything your home and garden needs.

8693 AIRPORT RD • REDDING • AAMIGOSUPPLY.COM
530.222.8850 • FIND US ON FACEBOOK: 

**YOUR BUSINESS
CARD AD COULD
BE IN THIS SPOT!**

Call Chris at:
945.2130

*Would you like your business featured here? Contact Chris at 530.945.2130
Support our NEW Bi-Monthly Newsletter with a donation and get an ad in the next issue!*

WVFC is a 501(c)3 non-profit organization. Your donations are tax deductible to the extent of the law.

